

Wichita firm to show architecture work

By IFAN PAYNE
Contributing Critic

The year-long series of exhibits sponsored by the KSU Department of Architecture, *Architecture from the Plains* continues this week with a display and presentation by the architectural firm of Platt Adams Braht.

This prominent Wichita firm was established in 1960 and both Sidney Platt, a founding member, and Dean W. Bradley, a staff architect will visit Manhattan to discuss their work and their designs on Wednesday.

"I see our firm as being a collection of individuals, rather than a cohesive corporation," said Dean Bradley in a telephone interview.

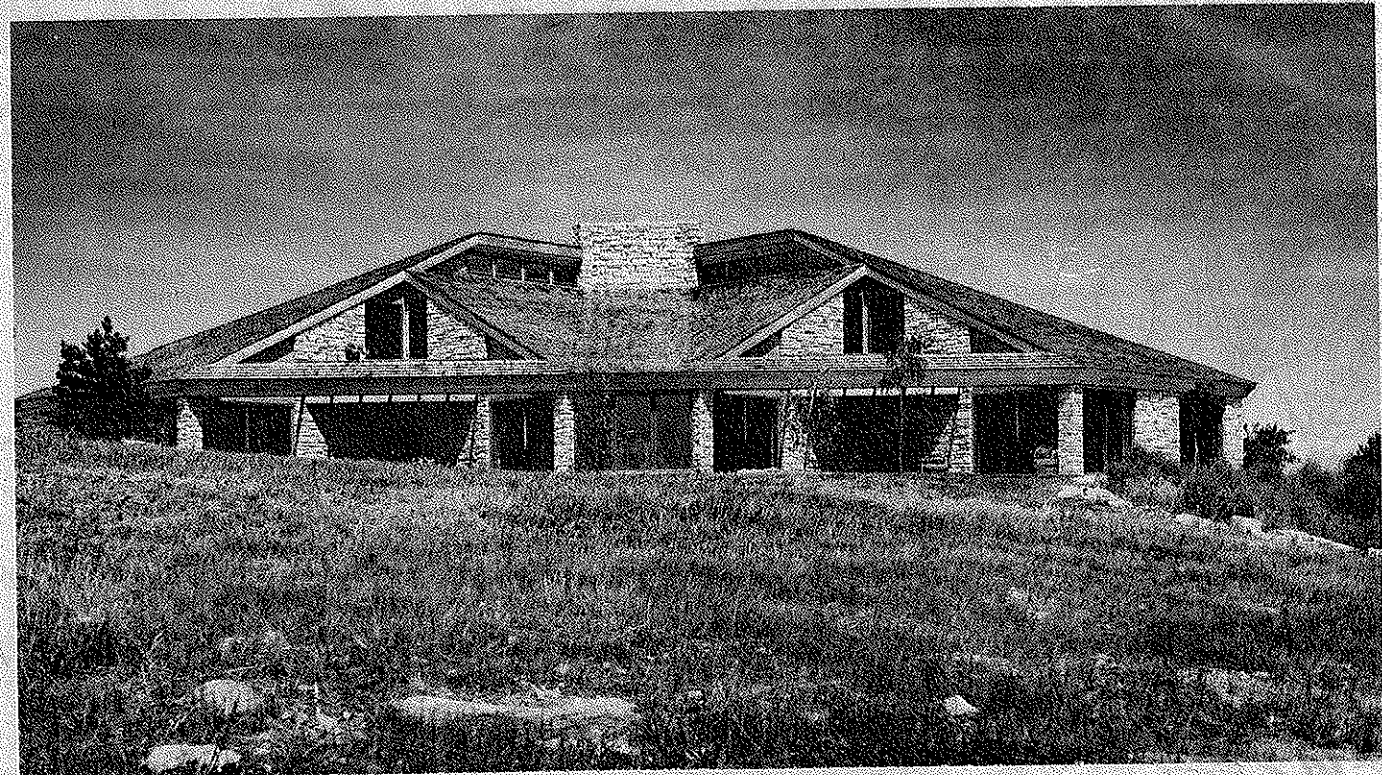
This concern for the individual qualities of each member of the firm is perhaps a reflection of the fact that the firm has intentionally pursued a diverse range of commissions, rather than specialize in, or concentrate on, the design of a limited range of building types. For this reason, the firm has sought to develop a professional staff of varied background.

"We are not all involved in the same thing at the same time," said Bradley.

Nor does the firm see itself as having developed any particular design style.

"One project we designed was in the French country chateau style...and another is akin to something on a Greek Isle...a grouping of little village-like structures...We try and stay somewhat fresh (in our design approach), whatever the requirements are."

Amongst the projects completed by Platt Adams Braht have been the *Center for the Arts* in Wichita, the *cor-*



The award-winning Staples house.

the category of Government Projects.

Energy conservation is very much a part of the concerns of Platt Adams Braht.

"We have a general tendency to bring energy conservation to the front at the beginning of a project and make it an issue from the start."

But, explains Dean Bradley, "energy conservation is not too new a concept, but it is now, out of necessity, taking a more prominent place."

In keeping with this concern, one of the most successful buildings design-

er's residence which is compatible with the landscape.

To Dean Bradley, this design exemplifies the diversity of the firm and the tendency to allow each staff member to retain an individuality with regard to design attitudes.

"The Staples house was situation where just a couple of people were involved in that...The design was a combination of a good client and a good situation in the firm."

Bradley and Platt will be discussing that good situation and showing

the presentation.

The last word remains with Dean Bradley.

"It is challenging to stay fresh...Some of the larger architectural firms working around a strong principal designer can retain a certain design image. But we have just variety."